

# We care for you.

The University Hospital Muenster,  
Germany



Münster is the  
most liveable city  
world-wide!

\* International LivCom Award 2004



# The University Hospital Muenster, Germany (UKM)...

...located within the „the most liveable city world-wide“ \*

## Muenster

- City in Westfalia (Northwest of Germany)
- 270.000 Inhabitants
- Students: 38.000
- Documented city since 1170
- „Bicycle City“ of Germany: 40% of movements within the city are done using bicycles

\* International LivCom Award 2004







# Medical research

- No. 1 in medical research in Northrhine-Westalia since many years

## Medical research focussed at

- Inflammation and transplantational medicine
- Cardiac and vascular medicine
- Neuromedicine
- Pre- and perinatal medicine including reproductive medicine
- Tumor medicine



# Medical education

- Most wanted medical faculty among students in Germany
- Students hospital: unique and recognized training facility
- Experienced in international students exchange









# University Hospital Muenster

- Number of available beds: 1.299
- Annually treated patients: > 40.000
- Surgical procedures per year: > 30.000
- Physicians total ~ 1.000 (including ~ 500 seniors)
- Nursing personal ~ 1.400  
(including 220 nurses with special training)
- Number of departments 31  
organized in 11 specialized centers

# Medical centers within the University Hospital Muenster

(Selection)

- Comprehensive Cancer Center (CCCM)
- Center for infectious diseases
- Center for pediatrics
- Center for thorax, cardiac and vascular medicine,  
including special Center for congenital heart diseases
- Dental center including orofacial surgery
- Transplantation center
- Trauma center



# Comprehensive Cancer Center Muenster (CCCM)

- Approx. 11.000 treated cancer patients per year
- Including ~ 4.000 newly diagnosed cases
- Interdisciplinary oncological outpatient ward
- 40% of all cancer patients treated in innovative clinical studies







# Major oncological areas

- Pediatric hematology/oncology (largest in Germany)
- Leukemias and lymphomas in children and adults
- Bone and soft tissue tumors  
(European leadership for Ewing Sarkoma and rhabdoid tumors, reference center for osteosarkomas)
- Malignant melanomas
- Breast cancer
- Prostate cancer
- Gastrointestinal cancer including liver and pancreas
- Lung cancer
- CNS-tumors
- Tumors of head, neck, otorhinolarynx and eyes



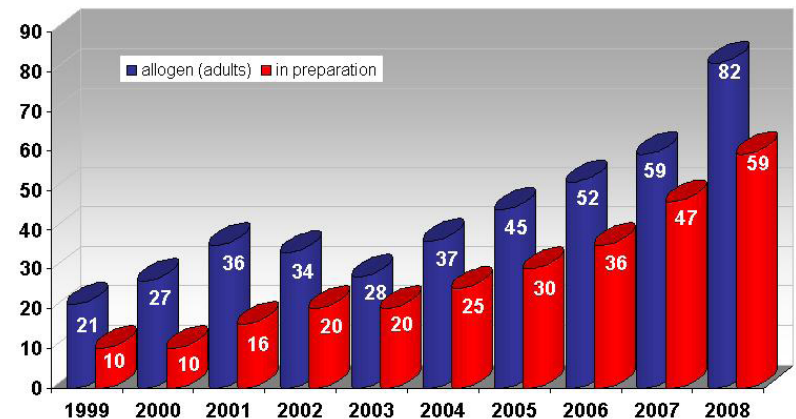
# Bone Marrow Transplantation

## Cell donor

- Autolog, allogene, syngene

## Diseases

- Acute Leukemia
- Severe dysplastic anemia
- Myelodysplastic Syndrome
- Multiple Myeloma
- Lymphomas



# International center for transplantation

- Any organ/tissue
- Any combination of transplantation
- Special concepts  
Immunotolerance protocols, innovative interdisciplinary liver cancer protocols, viral hepatitis B and C, inherited disease in both children and adults, leukemia, donor programs
- Living related organ transplantation
- Cellular therapies
- Bridging for organ failure



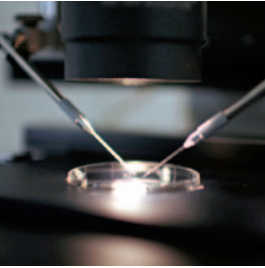




# Reproductive Medicine

Internationally leading center for

- Fertility diagnostics
- In vitro fertilisation
- Clinical andrology



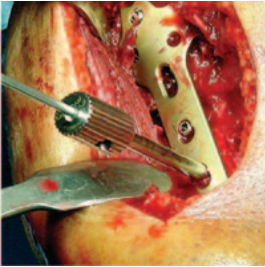
# Trauma center and reconstructive surgery

## Trauma

- Posttraumatic deformities and contractures, infections, mal- and non-unions; implant-failure
- including pelvis and spine

## Hand-Foot

- Replantations, microvascular techniques, congenital and posttraumatic deformities, nerve transplantation



# Trauma center and reconstructive surgery

## Endoprosthesis

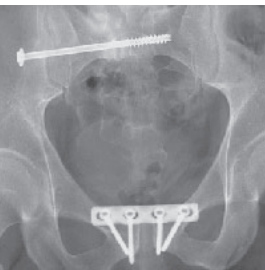
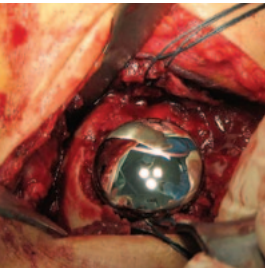
- Revision surgeries, implant-failures, infections

## Sports

- Arthroscopic and combined repair and stabilization

## Telemedicine

- Worldwide telemedical consultation service





# Cardiovascular Diseases

- Division of rhythmology
- Division of cardiology and angiology
- Cardiosurgery
- Vascular surgery
- Center for congenital and aquired heart defects
- European center for cardiovascular imaging



# Special patient service

## Supporting services (Selection)

- Ergo- and Physiotherapy
- Hydro- and Balneotherapy
- Diabetes- and dietary center
- Stoma- and incontinence treatment and training

## Additional offers

- Music programs
- Weekly performance of Children's Theater
- Art exhibitions

# Special service for international patients

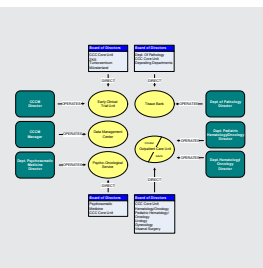
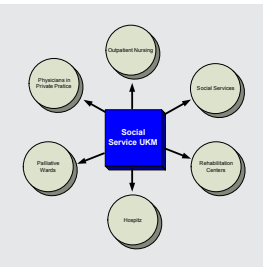
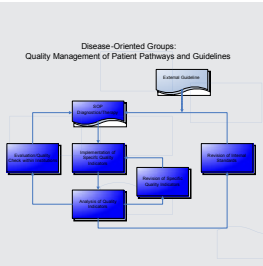


- Central management  
including organization, accomodation and financial arrangment
- Translators just in time
- Hot spots for web access
- Personal phone line
- International TV programes
- Single or double bed rooms (including rooming in)
- Family house for accompanying persons
- Cultural adapted cusine and housing
- Medical airport transfer



# Knowledge transfer

- Medical training for interns, seniors, consultants and nurses
- Assistance in international certification programs
- Special disease-specific cooperations
- Support for establishment of treatment programs
- Videoconferencing for medical and management consultation



# Contact

## **International Patient Management**

[international-patients@ukmuenster.de](mailto:international-patients@ukmuenster.de)

[www.klinikum.uni-muenster.de](http://www.klinikum.uni-muenster.de)